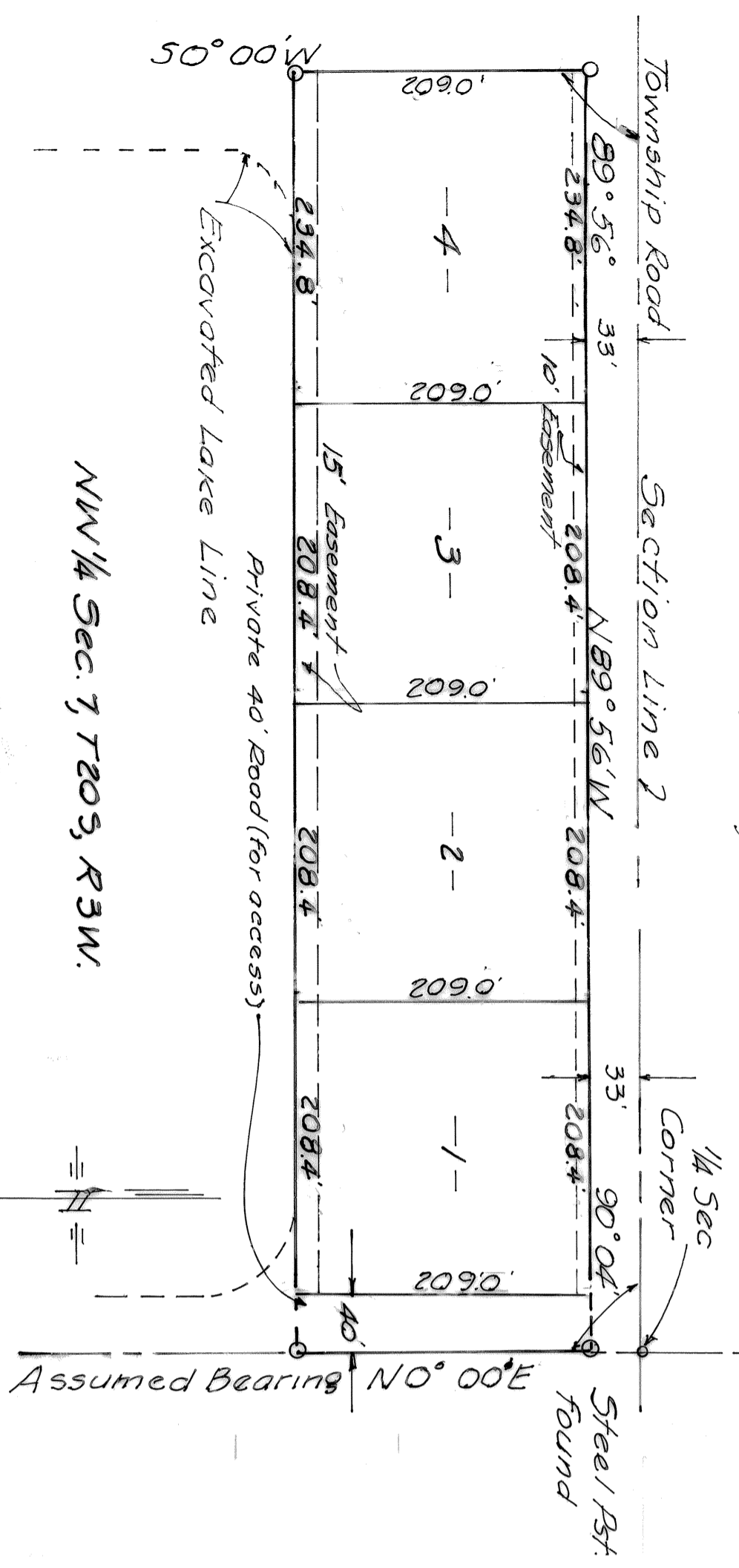
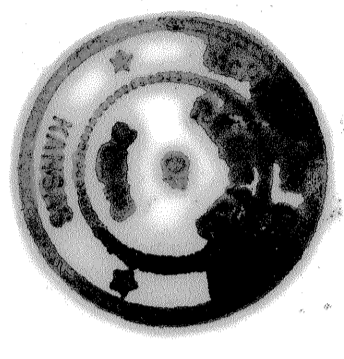


S.W. 1/4 Sec 6, T20S, R3W.



SCALE 1"=100'

State of Kansas, McPherson Co., SS.  
 This instrument was filed for record  
 on the 9<sup>th</sup> day of February, 1977  
 at 9:55 clock A.M. and duly recorded  
 in book 117 on page 83  
Pauline Nelson  
 Register of Deeds



**DESCRIPTION & SURVEYORS CERTIFICATION**

Beginning at the N.E. corner of the NW 1/4 of section 7, T20S, R3W thence South on the East 1/4 Section line 33.0 feet on an assumed Bearing 50°00'W, to the N.E. Corner of said Plot; thence on bearing N89°56'W, a distance of 900.0'; thence on bearing 50°00'W, a distance of 2090.0'; thence on bearing 589°56'E, a distance of 900.0'; thence on bearing N0°00'E, a distance of 2420.0' and to the point of beginning said tract contains 4.318 acres more or less, and is a part of the NW 1/4 Section 7, T20S, R3W, in McPherson County, Kansas. I, F.R. Rankin a Licensed surveyor in the state of Kansas, Hereby Certify that I surveyed the above described tract and did divide it into lots, as shown on the above Plot, I, further Certify all lines, dimensions, bearings and angles are correct so far as it is known to me

Signed this 22<sup>nd</sup> day of December 1976, at McPherson, Kansas

F.R. Rankin  
 Surveyor

**OWNER'S CERTIFICATION**  
 STATE OF KANSAS )  
 COUNTY OF McPHERSON )  
 VEYOR This is to Certify that the undersigned are the owners of the land described in the attached plot and they have caused the same to be surveyed into lots and subdivided as indicated hereon, for the purpose of re-sale under the Title as hereon indicated.  
 Signed (Husband) William Janssen  
 Signed (Wife) Ellen Janssen

STATE OF KANSAS, COUNTY OF McPHERSON, SS.  
 I, William Janssen A Notary Public in and for said county, in the State of Kansas, do hereby Certify that William H. Janssen, and Lillian R. Janssen personally known to me to be the same persons who executed the foregoing instrument of writing for the uses and purposes therein set forth, this 1<sup>st</sup> day of December 1976,  
 My Commission expires March 11, 1977 Signed William Janssen



— JANSSEN — ACRES —  
 A Submission of the NW 1/4 Sec 7, Twp 20S Range 3 West of the 6th P.M.

**CITY ENGINEER APPROVAL**  
 STATE OF KANSAS ) S.S.  
 COUNTY OF McPHERSON )  
 Be it known, that the attached plot was submitted to me and that the same was hereby approved this 14 day of December 1976,  
 Signed Charles W. Henry  
 City Engineer

**BOARD OF PUBLIC UTILITIES APPROVAL**  
 STATE OF KANSAS ) S.S.  
 COUNTY OF McPHERSON )  
 Be it known, that the attached plot was submitted to me and that the same is approved this 14 day of Dec. 1976,  
 Signed Gen. Mgr. Board of Public Util.

**CITY PLANNING COMMISSION**  
 STATE OF KANSAS ) S.S.  
 COUNTY OF McPHERSON )  
 Be it known, that the attached plot was submitted to me and was approved this 14 day of December 1976,  
 Signed Rayman Janssen

**CITY ATTORNEY**  
 STATE OF KANSAS ) S.S.  
 COUNTY OF McPHERSON )  
 Be it known, that the attached plot was submitted to me and that the same was approved this 14 day of December 1976,  
 Signed Walter C. Janssen  
 City Attorney

**CITY COMMISSION**  
 STATE OF KANSAS ) S.S.  
 COUNTY OF McPHERSON )  
 Be it known, that the attached plot was submitted to the City Commission of the City of McPherson, Kansas and that it was approved and that said approval is on record in the minutes on the 22<sup>nd</sup> day of December 1976,  
 Attest Fred. D. DeHoff  
 City Clerk

**COUNTY ENGINEER**  
 STATE OF KANSAS ) S.S.  
 COUNTY OF McPHERSON )  
 Be it known, that the attached plot was submitted to me, and that the same was approved this 21<sup>st</sup> day of December 1976,  
 Signed Walter Janssen  
 County Engineer

**COUNTY ATTORNEY**  
 STATE OF KANSAS ) S.S.  
 COUNTY OF McPHERSON )  
 Be it known, that the attached plot was submitted to me and that the same was approved this 20 day of December 1976,  
 Signed Gary L. Janssen  
 County Attorney

**COUNTY PLANNING BOARD**  
 STATE OF KANSAS ) S.S.  
 COUNTY OF McPHERSON )  
 Be it known, the attached plot has been approved and accepted this 14 day of December 1976,  
 Signed William Janssen  
 Chairman

**COUNTY COMMISSION**  
 Be it known, this plot has been approved and accepted this 14 day of December 1976,  
 Attest William Janssen  
 County Clerk

**REGISTER OF DEEDS**  
 Entered and recorded this 14 day of December 1976,  
 REGISTER DEEDS

